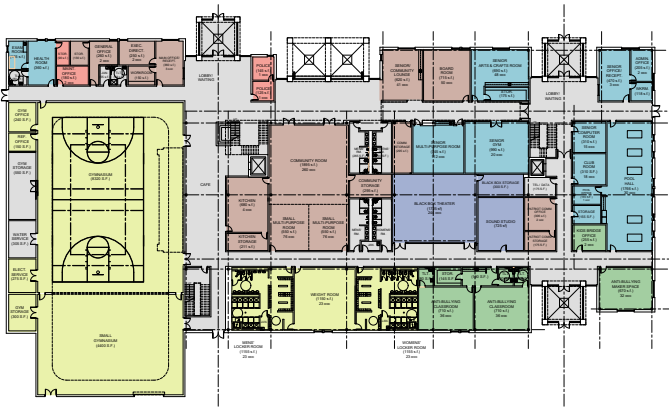


Inspired by Kahn's bath house and other designs he imagined as part of his master plan for the site



Ewing Senior & Community Center Ewing Township, NJ

The new building replaces the former senior/community center which had been destroyed by a fire. The facility's redesign is double in size to accommodate the Township's significant growth and new programs centered on the arts.



▲ A two-story void with clerestory windows delivers an abundance of natural light along the main circulation corridor

Project Size 75,000 sf
Completion Date November 2025

The new community center is sited on the property of the historic Trenton Bath House - designed by renowned architect Louis Kahn. Its location is protected by NJ's Green Acres program and by the State Historic Preservation Office.

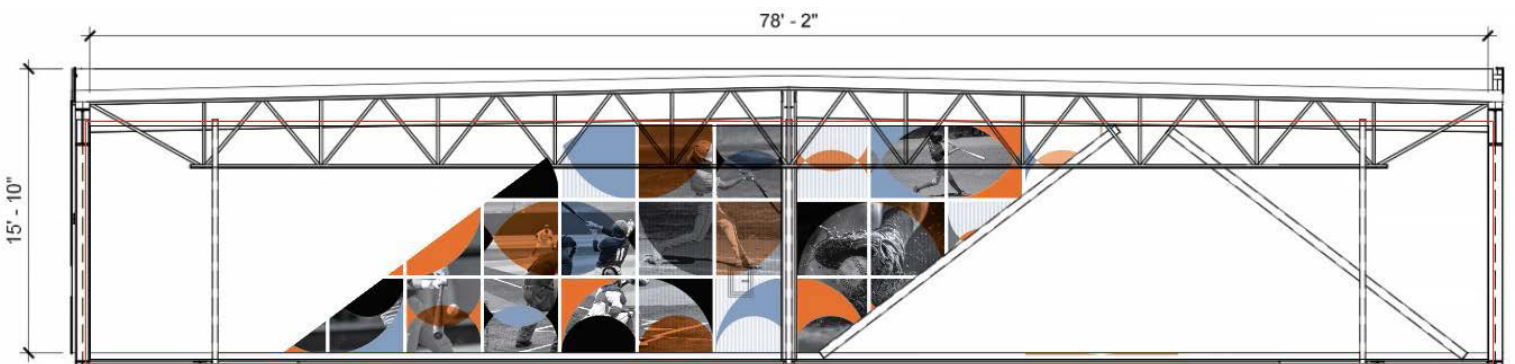
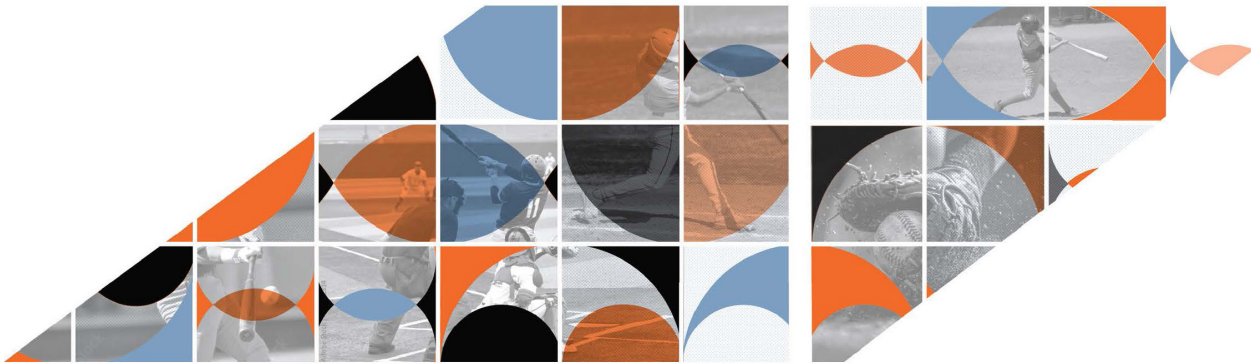
The new center features two distinct entrances: the main community center entrance and a senior center entrance. When completed the community center will be double its original size and will include a gymnasium, fitness/locker rooms, therapy pool, music room, sound studio and black box theater, maker space, lounge, café, kitchen, health and exam rooms, multipurpose rooms, and offices.

Its exterior's aesthetic evokes Kahn's revolutionary bath house design and includes a vegetated roof system as well as rain gardens surrounding the building.

- ▶ Inspired by the Louis Kahn Bath Houses and their mural design, DIG created environmental graphics throughout the facility that feature the unique history of the Ewing Township area

Each wall graphic focuses on one aspect of Ewing history: the bath houses, the Lenape Indians, dairy farms, the General Motors plant where World War II aircraft were manufactured, a map of the area and the communities within it, notable historical buildings and architecture, and a timeline graphic which greets patrons of the facility as they enter at the Senior entrance.





▲ For the Gymnasium, a run around the upper-level track is punctuated by various featured sports activities graphically depicted and consistent with the rest of the facility, but cropped within diagonal skewed polygons to emphasize both forward movement and restating the angled architectural elements in the gym, grounding them and providing additional purpose.